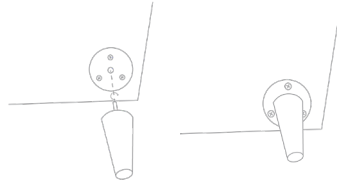
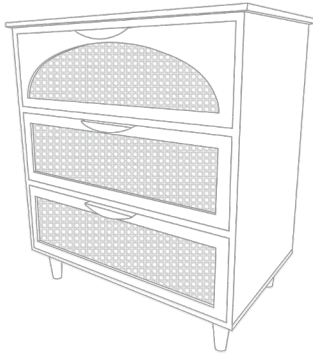


# OLIVER BONAS

## BUE CHEST OF DRAWERS



We hope you love your purchase, however if you aren't completely happy please retain your packaging to ensure its safe return

MDF, RATTAN and MANGO WOOD

Each piece has been individually handcrafted to create a unique piece of furniture.

### RATTAN

Rattan is a natural material and variation may occur adding charm to each piece.

### CARING FOR YOUR FURNITURE

To help maintain the natural beauty and performance of your piece of furniture do not position in front of radiators, avoid direct heat, direct sunlight, moist environments and outdoor use.

### WARNING!

Any spills should be removed immediately. Never let them dry out on the surface.

To maintain the appearance of your furniture, we suggest regular dusting with a soft cloth and to always use a coaster to protect the surface.

Avoid using furniture polish, furniture wax and oils as these may mark the surface.

Take care when moving the furniture.

Do not drag furniture as it may cause damage to the joints.

Please note, the above are guidelines only.

Periodically check fittings as they may come loose over time.

Domestic use only. Not recommended for children.

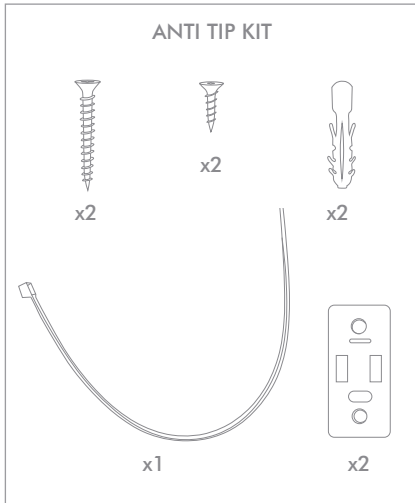
Please retain this information for future reference.

Oliver Bonas  
Unit F, Davis Road Industrial Park  
Chessington KT9 1TQ

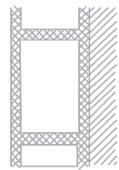
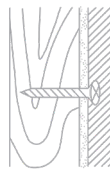
Oliver Bonas Ireland Ltd  
The Black Church St Mary's Place  
Dublin 7 Republic of Ireland

# OLIVER BONAS

## ANTI TIP KIT

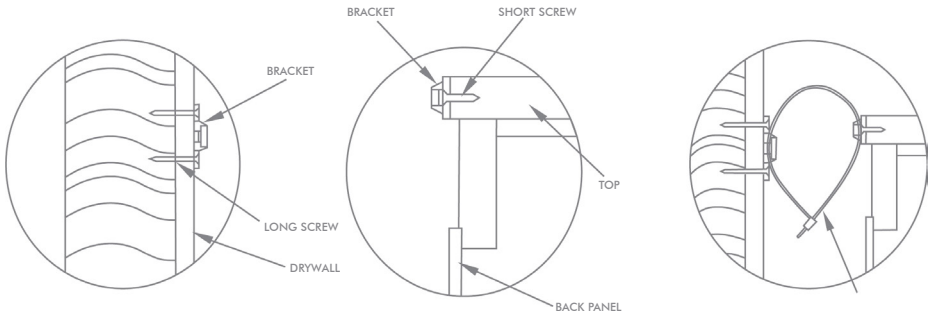


For in children's rooms please use the anti tip kit provided for safety. Please ensure the correct fittings are used for the chosen wall substrate:



(Special fittings needed)

### ASSEMBLY



1. Mark the location of the hole on the wall using bracket approx 1" below the top of furniture. Pre-drill the holes at panel location & insert wall plug. Align bracket onto wall plug & secure using long screws.

2. Move the furniture to its final position against the wall and mark the location of the wall bracket on the back of the furniture. The bracket that attaches to the furniture must go into the solid wood piece at the top, not into the thinner back panel. Move the furniture away from the wall and place a bracket on the mark. Mark and drill holes for the screws using a 3/32 drill bit. Attach the bracket to the furniture using the short screws.

3. Move the furniture to its final position and align the bracket on the furniture with the bracket on the wall. Thread the strap through the bracket as shown, and tighten until snug. Do not over-tighten.

### IMPORTANT

Check that the wall bracket is firmly screwed into the stud, the furniture bracket is firmly attached to the frame, and the strap is snug.